



SALONA

XXXIX ▶ 39







HERITAGE

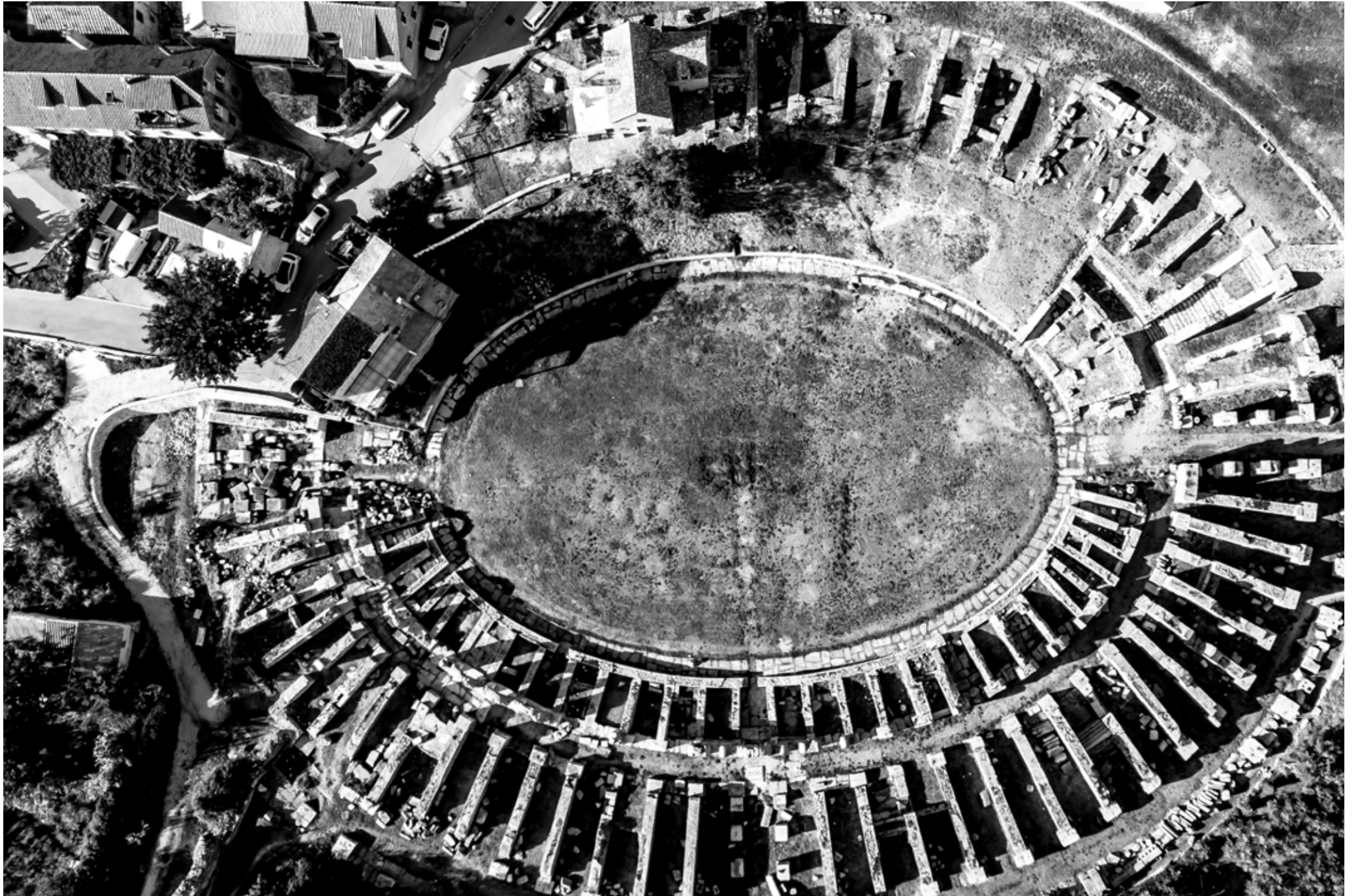
The remains of the ancient City of Salona, the most important city in the ancient world, are located six kilometres north of Split. Salona's favourable geographical position in the middle of the Eastern Adriatic Coast and its location within the well-protected Kastela Bay, along the delta of the river Salon (present Jadro) as well as good road connections, presented a precondition for fast and smooth development of this incredibly inspiring city, the metropolis of the Roman Province of Dalmatia.

Salona was initially a coastal stronghold and a port of the Illyrian Delmati. Furthermore, this port located in the eastern wing of the protected bay was a great impetus for the development of the city. The development was caused primarily by trade activities, and then, especially in the late centuries, by

the change in people, worldviews, religious teachings, construction, shipbuilding, and other skills.

Today, Salona, materially speaking, is a pile of scattered and disposed remnants giving us just an idea of its former size, strength, extraordinary power and culture. Thus, a broken part of the letter, more precisely the serif of the initial letter "S" from the "SALONA" inscription, symbolizes today's Salona and its remnants. But even more, it symbolizes the former mighty Salona. All of this is exactly what the serif through monumental capital represents. When the broken piece of the letter breaks off as shown in our logo, it resembles a sailboat and refers to the ancient shipbuilding tradition that the people of this area have been dealing with since the ancient times.





SUPREME SAILING SATISFACTION



The Salona S39 combines the best in technology, design, quality and comfort. It is simply fast and seaworthy and at the same time comfortable inside, with the right cockpit heights, and outside, with a wide cockpit deck featuring comfortable benches and easy access to the mainsail winches from the helmsman position. The underwater profile is composed of a long aluminum stock rudder that guarantees stability and control, as well as a standard modern keel design of two meters.

More than a thousand years of shipbuilding experience, knowledge and passion, passed from generation to generation, is incorporated in Salona brand. Strong and light structure, which is a consequence of the advanced building techniques, such as vacuum infusion of the hulls and decks, results in surpassing sailing performance.

Beautiful design by Cossutti relies on the experience and understanding of our customers and Salona lovers.

The Salona yacht can easily be sailed shorthanded, but crew comfort and safety are secured by ergonomically designed layouts that offer functional and elegant seats for pleasant family cruising. Our after-sales network is active on five continents, meaning that our Salona owner will never feel alone.







SALONA QUALITY THAT MAKES THE DIFFERENCE

From the very beginning, at Salona Shipyard, we are dedicated to getting every detail incorporated while aiming for the performance perfection and enjoyment.

The first-class components and modern building materials, varying from multiaxial glass and carbon fibres with high-quality resins, make our yachts an example of uncompromised construction quality. Additionally, our yachts provide enjoyment in sailing in a wide range of conditions.

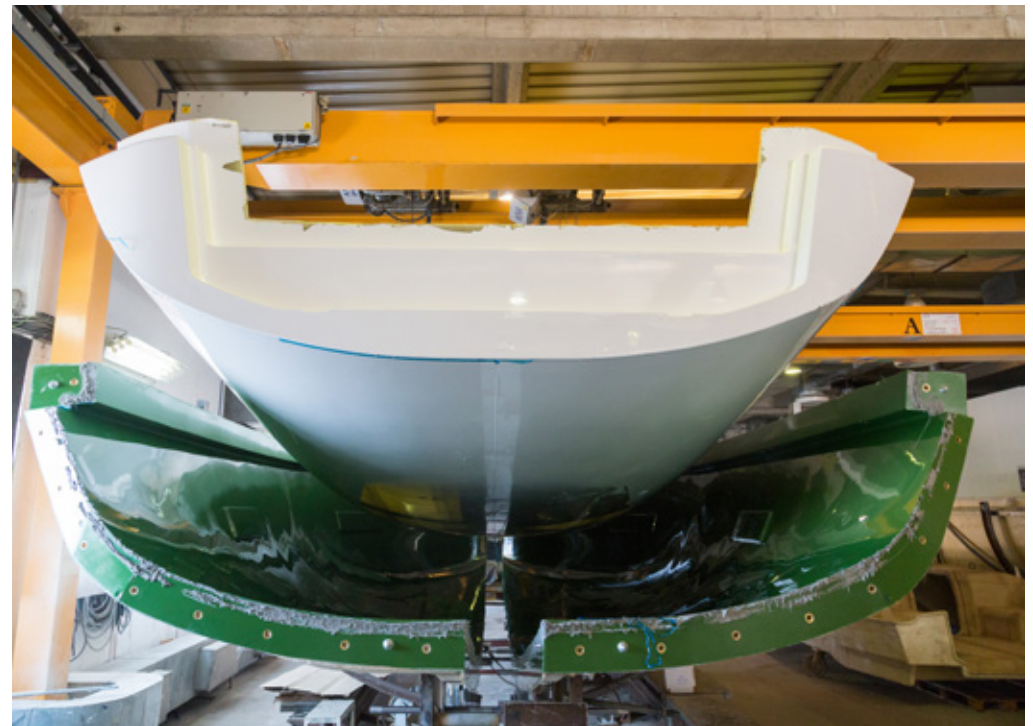
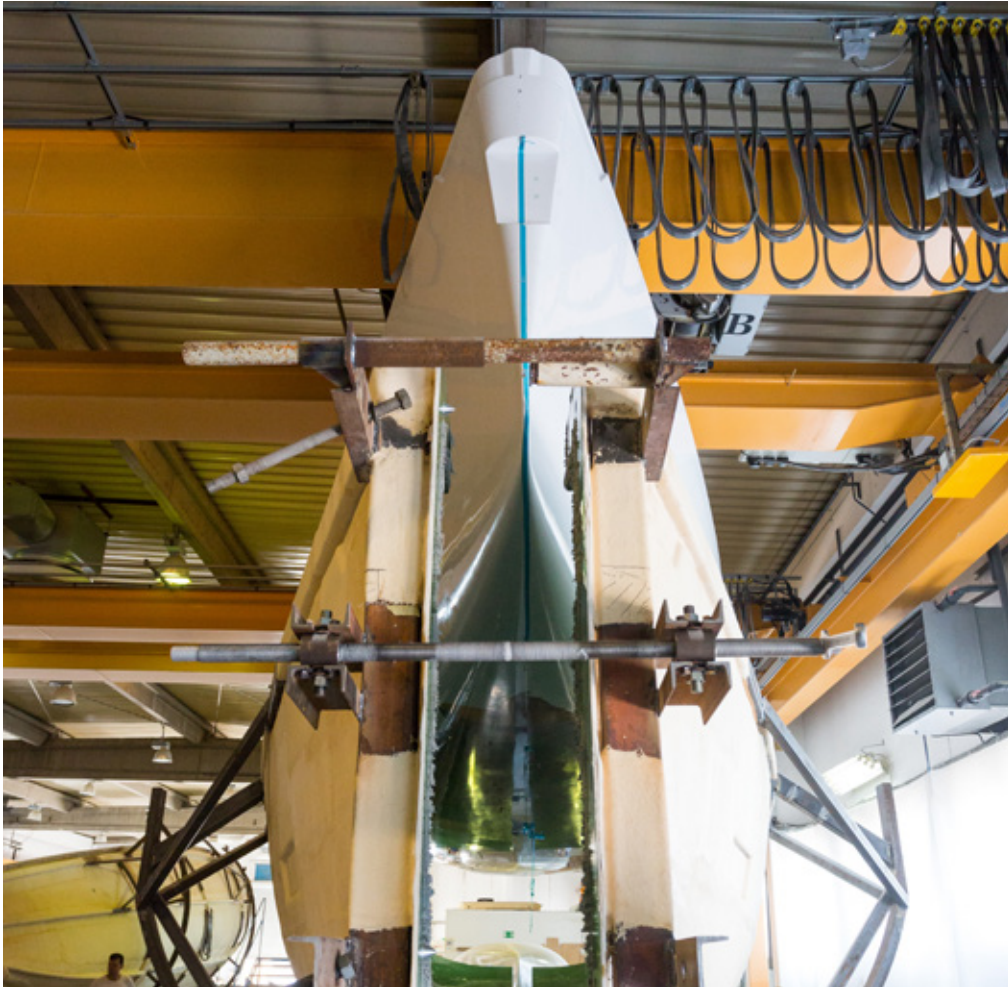
Apart from the mentioned, Salona S39, as all our models, has been reinforced with stainless steel interior frame structure which supports the keel, mast, and shrouds, giving the yacht a solid, but light structure. The production process has been optimized for quality control, enabling each vessel inspection at every production phase. After the boat leaves the production site, our team of experts is at service for all questions from Salona owners.

The superior yacht equipment is made by world-leading companies, perfectly matching

the Salona style. But the technology itself is not what makes the yacht a great one. It is the team of experienced employees at our shipyard that create the perfect dream yacht!

The Salona S39 comes with a comprehensive range of options to suit the taste of every individual's sailing experience!





SALONA 39 STRUCTURES

The hull and deck laminates of the Salona 39 are constructed using the latest vacuum infusion technology combined with tri-axial oriented fibreglass fabric. The innovative grid construction provides skippers with the confidence to take the Salona 39 across any ocean condition without hesitation.

The Salona 39 is certified A-Ocean by Germanischer Lloyd, the highest certification in the industry.



SALONA EXCELLENCE



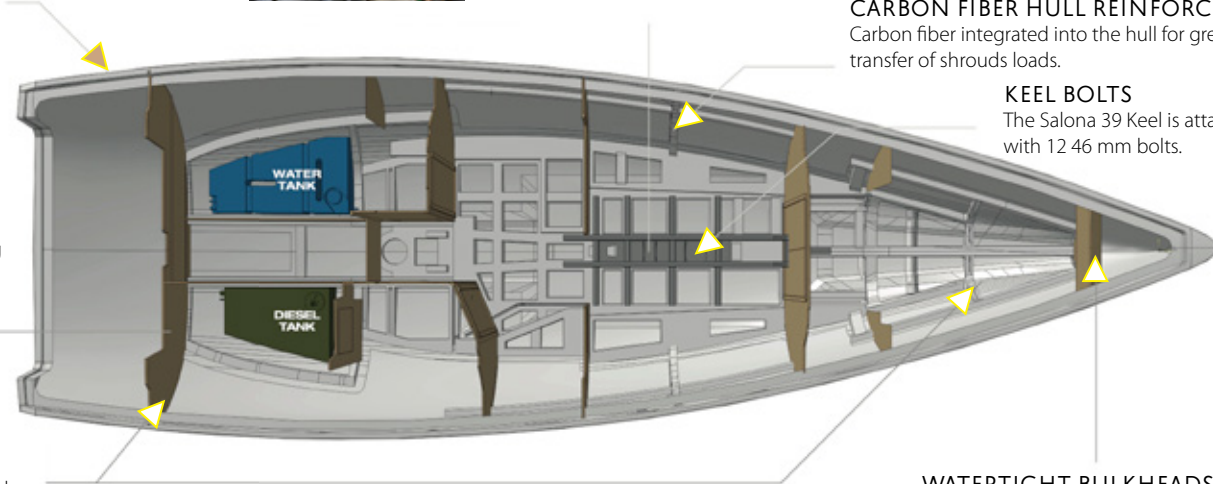
VACUUM INFUSED CONSTRUCTION

- the hull is constructed using vacuum infusion technology, obtaining an extremely stiff and lightweight hull.



STAINLESS STEEL STRUCTURAL GRID

The Hallmark feature of every Salona yacht is the stainless steel grid that connects the Keel, with the mast and the shrouds, sharing the load of the rig evenly throughout the hull. This grid, combined with the vacuum infused hull makes the Salona 39 one of the stiffest production boats in the market with an amazing upwind performance.



CARBON FIBER HULL REINFORCEMENT

Carbon fiber integrated into the hull for greater stiffness and better transfer of shrouds loads.

KEEL BOLTS

The Salona 39 Keel is attached with 12 46 mm bolts.

WATERTIGHT BULKHEADS AFT

Watertight bulkheads separate the steering area from the interior accommodations for safety and reassurance in the event of a rudder loss.

BULKHEADS

The Salona 39 has the option to have the bulkheads in carbon to add strength, stiffness and weight savings.

WATERTIGHT BULKHEADS

Watertight bulkheads separate the anchor compartment and the interior accommodation for safety and reassurance in the event of a collision.

MADE TO BE DIFFERENT

The vacuum infused hull and deck make sure that the ratio between fibre and resin is perfect and guarantees optimal strength and weight. Vacuum infusion makes boats lighter and stiffer.

The underwater part of Salona yacht is covered with a transparent gel coat, which ensures the highest standard of quality control.

At the heart of every Salona yacht, there is a steel frame that securely distributes the load from the keel, shrouds, and mast evenly throughout the hull, resulting in maximum

stiffness and excellent upwind performance. This process ensures extra safety and outstanding quality.



LUXURIOUS OUTDOOR



Every detail concerning the Salona S39 was carefully chosen to offer the perfect result in safety, style, and ergonomics while simultaneously providing the attractive experience of freedom and life on a perfect dream yacht.

There are four spacious lockers, two under the seats and two under the wheels, one of which serves as a life raft storage.

The German mainsheet system and non-overlapping jib allow smooth and precise control even with reduced crew.





INDOOR ELEGANCE



Joining lavish comfort with superb functionality, the Salona interiors are created with passion and an in-depth understanding of our customers' needs.

The Salona S39 yacht includes a beautiful saloon with a large L shape sofa and sofa on the starboard side, enabling the entire crew to gather in one spot. Living is made easy with foldable tables, chart desk and saloon table with bottle storage inside.

The L shaped galley on the port side provides ample storage and work surfaces with strategically placed grab rails, providing the perfect environment for preparing the perfect dish and keeping the crew safe even in open waters.

Both two and three-cabin versions are available with king-size beds and full standing height, not forgetting good size wardrobes and storage facilities suitable for a memorable and comfortable sailing journey with family or friends.





The Salona S39 comes with a comprehensive range of options to ensure that we can perfectly tailor the yacht to each individual's sailing experience.

In this brochure, we will showcase most of the standard features and basic level of customization.

Cabin options:

Salona S39 is available in two-cabin or three-cabin layout option.

The elegant and comfortable cabins with king-size beds provide ample accommodation and plenty of space for the outstanding gatherings of friends, family, or crew. It also features comfortable bathroom, with an option for separate shower room for the superb convenience.

HIGH LEVEL OF CUSTOMIZATION

STANDARD - A OPTION
2 CABINS - 1 HEAD



B OPTION
2 CABINS - 1 HEAD
WITH SEPARATE SHOWER



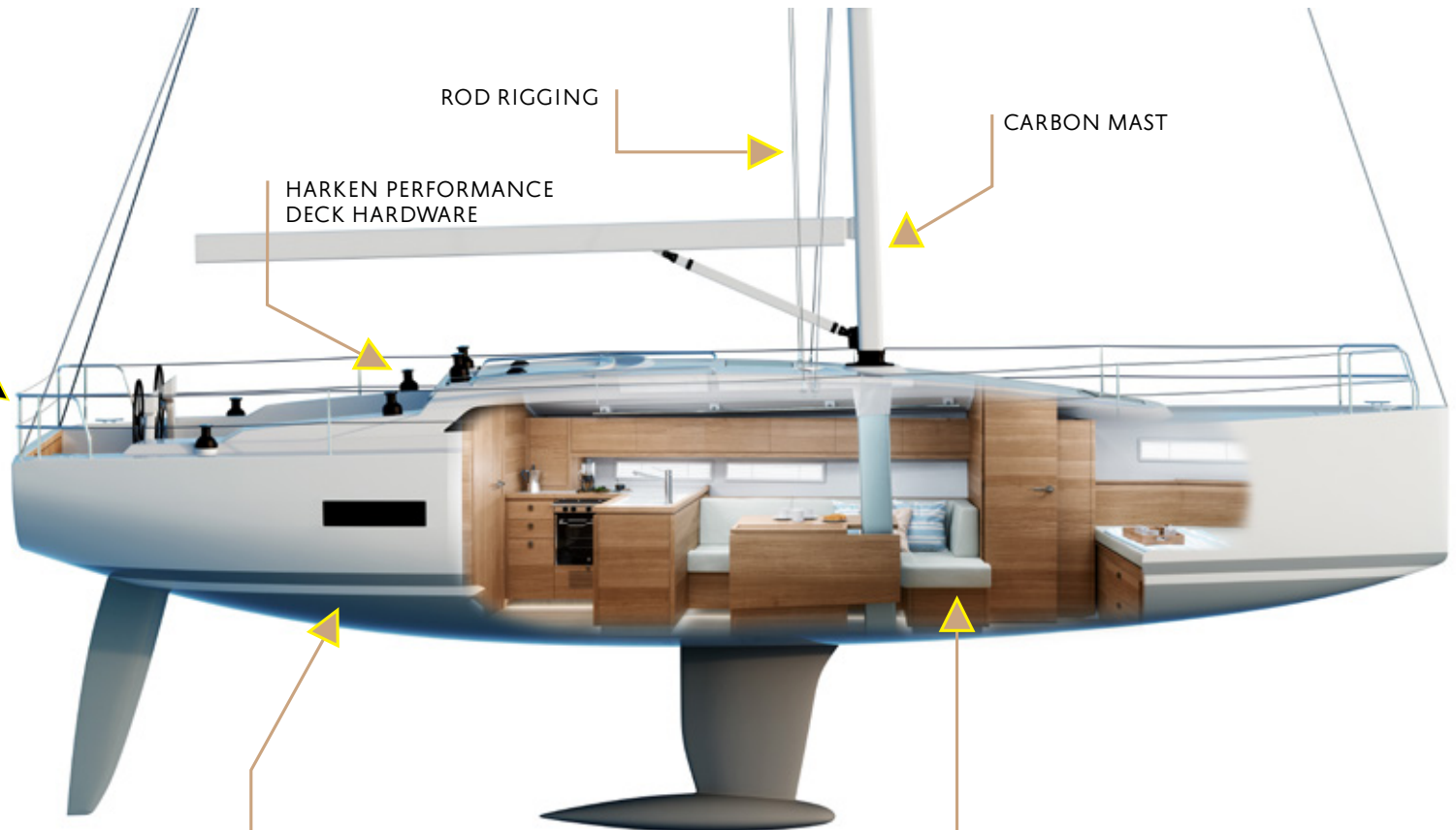
C OPTION
3 CABINS - 1 HEAD



TEAK COCKPIT



SWIMMING PLATFORM



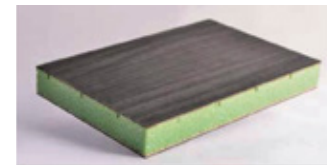
ROD RIGGING

CARBON MAST

HARKEN PERFORMANCE
DECK HARDWARE

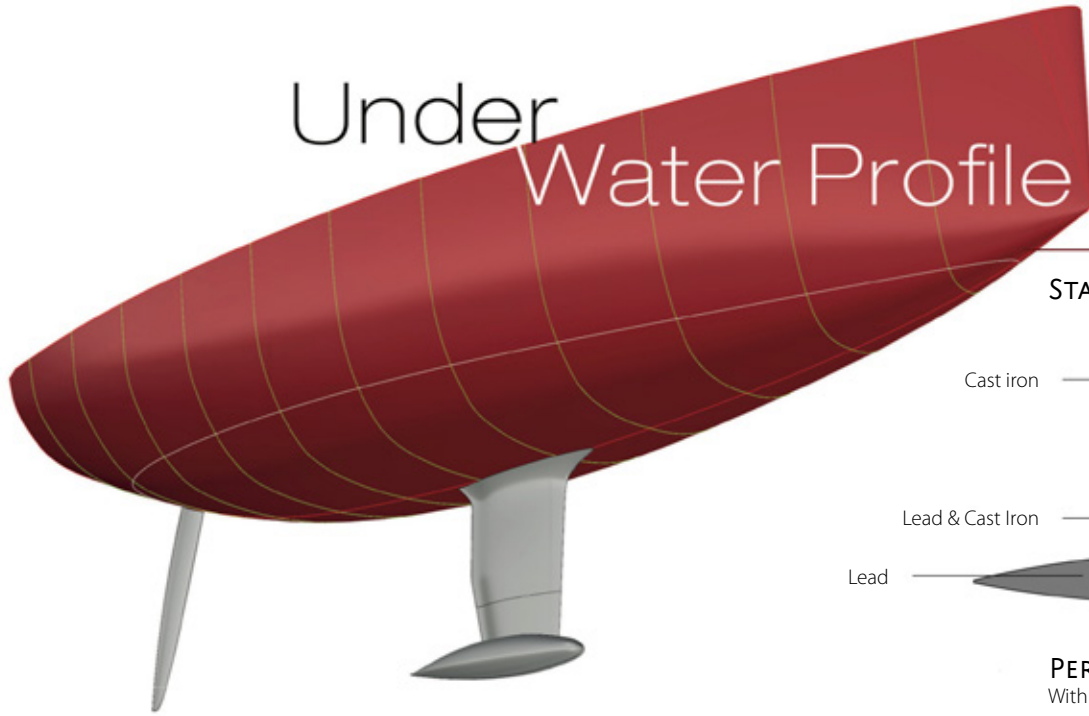
SHAKEWELL SEACOCKS
- special through hull that are flush with hull for
minimum turbulence and drag

FURNITURE IN LIGHT MATERIAL - SAVE
30% - 40% OF FURNITURE WEIGHT



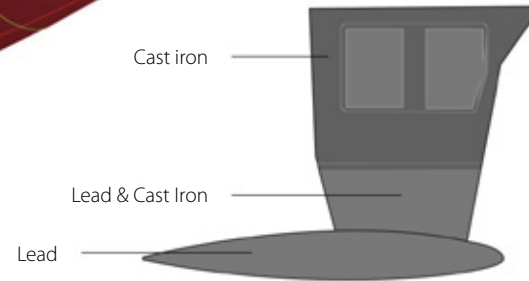
SOLUTIONS FOR ADVANCED PERFORMANCE

Under
Water Profile



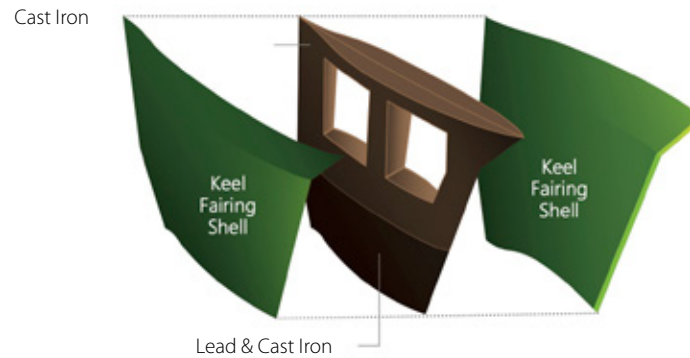
KEEL OPTIONS

STANDARD KEEL 7'/2.15M



PERFORMANCE KEEL 7'/2.15M

With GRP Fairing Shells for Optimum Keel Shape



UPHOLSTERY AND WOODEN SAMPLES

SALONA 39 can be additionally customised with a wide range of colors and fabric choices:

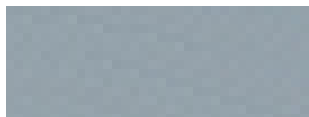
Gelcoat colors

Gelcoat

Blue



Grey



Red



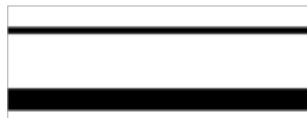
White Standard



Stripes

Stripes

Black - Standard



Blue



Gray



Red



Blue hull



Gray hull



Red hull

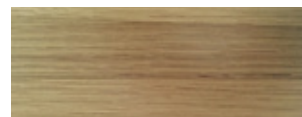


Furniture wood

Teak



Oak



Bleached Oak



Floor board

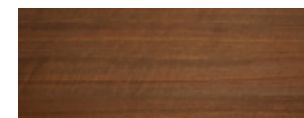
Mahogany & Holly



Teak & Holly



Walnut



Ash

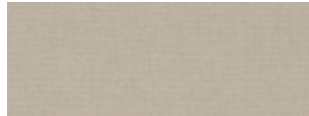


UPHOLSTERY AND WOODEN SAMPLES

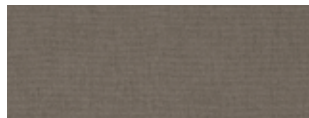
Upholstery

JADE- Standard

Jade_9370



Jade_9120



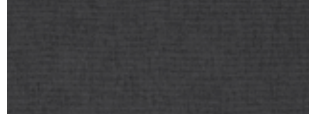
Jade_9402



Jade_9605



Jade_9410



TIAGO- Optional

Tiago_9130



Tiago_5453



Tiago_6110



Tiago_3718



Tiago_5454

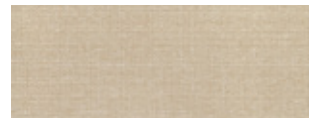


CEDROS- Optional

Cedros_9440_pl



Cedros_9603_pl



Cedros_9160_pl

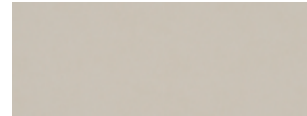


Cedros_9905_pl

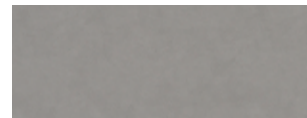


INVICTUS _ Artfical leather-Optional

Invictus_8104_pl



Invictus_3102_pl



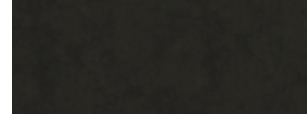
Invictus_5483_pl



Invictus_5474_pl

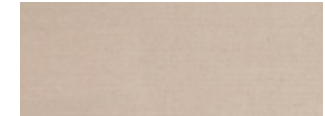


Invictus_9000_pl



Exterior fabrics

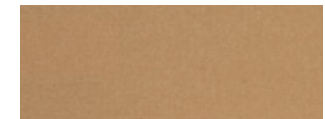
Sunbrella 5030 Oyster



Sunbrella 5035 Silver



Sunbrella 5026 Dune



Sunbrella 5088 Charcoal Pique



Sunbrella 5029 Jockey Red



SPECIFICATIONS

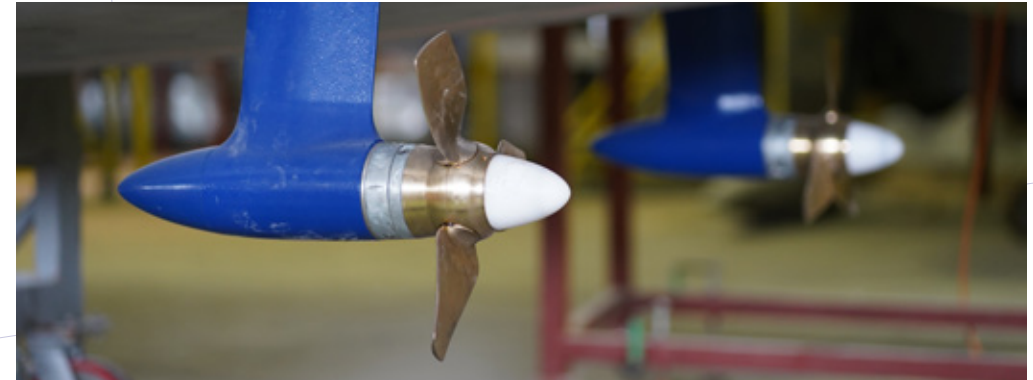
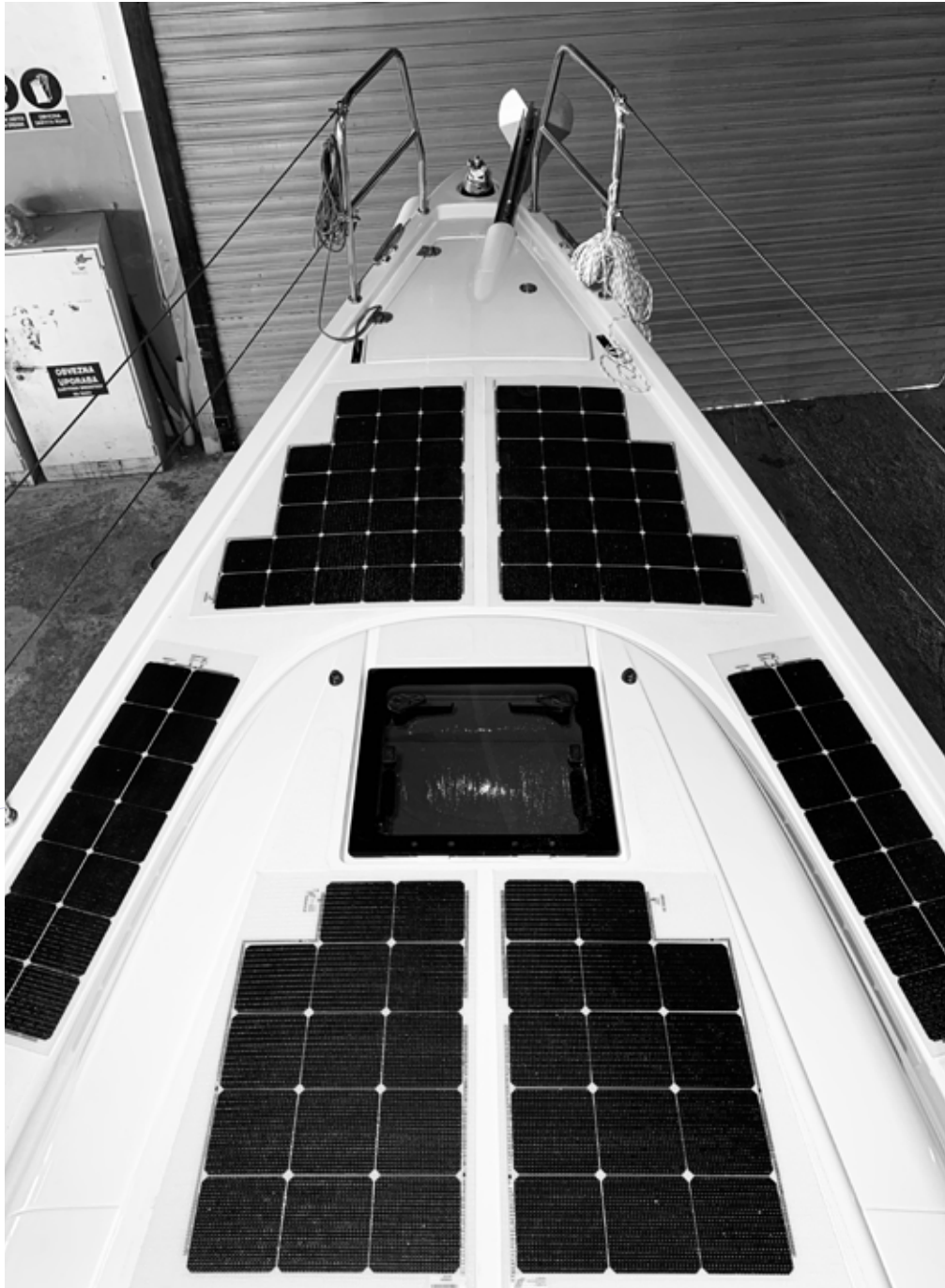


TECHNICAL DATA

Hull	11,60 m
Length Waterline (LWL)	10,01 m / 32,8' ft
Beam Max	3,72 m / 12' ft
Draft	2,1 m / 6,8' ft
Displacement Empty	6.200 kg / 13.668 lbs
Ballast	2.200 kg / 4.850 lbs
I	14,85 m / 48,7' ft
J	4,44 m / 14,5' ft
P	14,45 m / 47,40' ft
E	5,20 m / 17' ft
Mainsail full batten	44 m ² / 474 ft ²
Genoa furling	36 m ² / 388 ft ²
Sails area total	80 m ² / 861 ft ²
Fresh water tank	180 L / 47,5 gal
Black water tank	42 L / 11 gal
Fuel tank	100 L / 26 gal
Engine	Yanmar 21,3 kW (29,1HP)
Design Category	A (Ocean)
Certification	DNV - GL (DIRECTIVE 2013/53/EU)
Design	Cossutti Yacht Design



ENVIRONMENTAL LUXURY YACHT

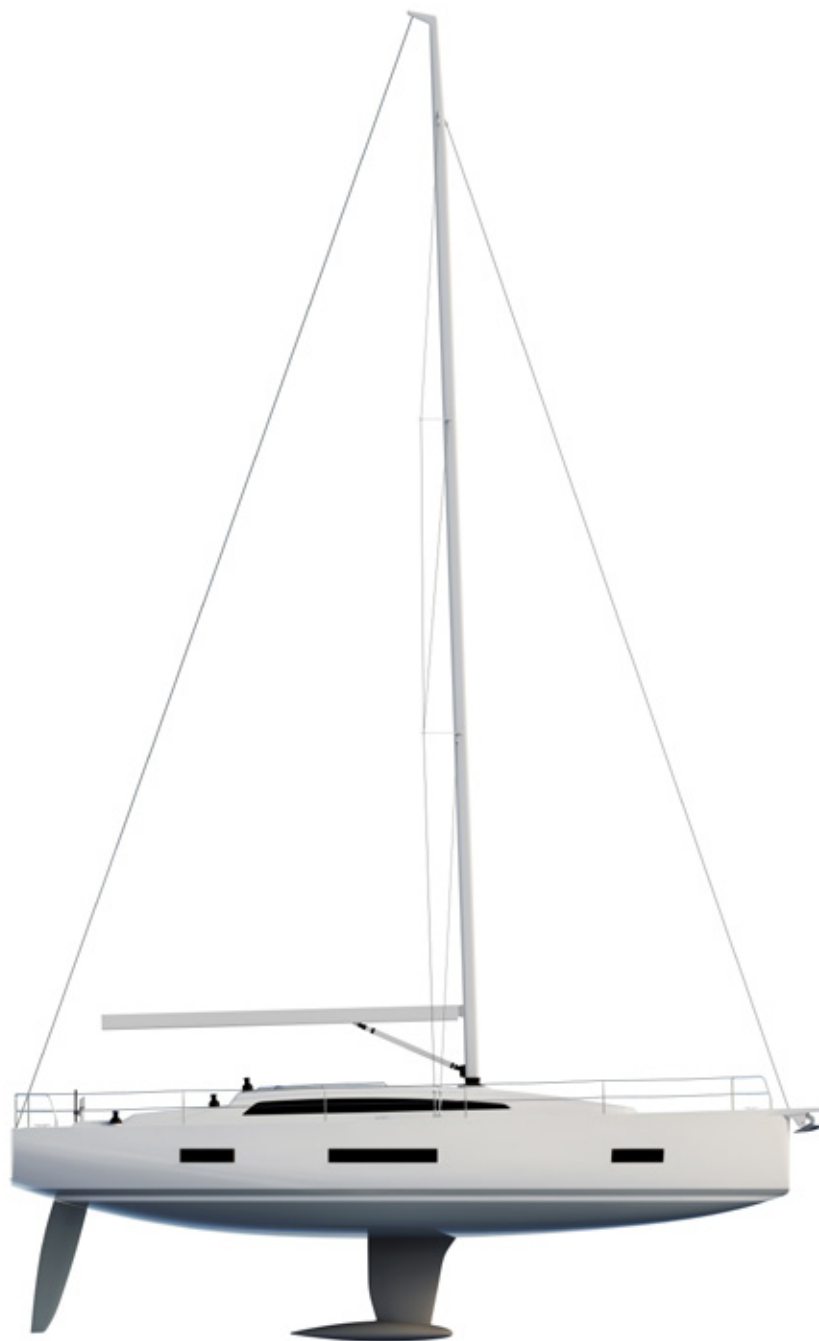


Salona is dedicated to supporting the electric-powered community on water!

We are actively developing, supporting, and promoting electric propulsion, which makes boating even better. We believe that the benefits of the electric propulsion are plentiful, such as:

- low maintenance
- improved safety
- no pollution
- silent operation
- reduced boat operation costs
- greater efficiency
- and our team will work passionately in the future to support yachting to become more sustainable and green.

WELCOME TO SALONA SHIPYARD IN CROATIA



Salona Yachts have been built in Croatia since 2001.

Croatia, as a country with a great reputation in boat building, is recognized as one of the most skilled boat building countries in Europe.

Having years of experience, Salona received several awards for the best yachts. One of the most notable awards that Salona won is the award for the European Boat of the Year and honour for a Boat of the Year in the US. We have aimed for the top quality, design, and winning performance while offering the supreme sailing delight to beginners or experienced sailors.

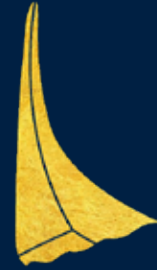
The best way to understand Salona is to try out our boats in their natural surrounding – on the sea. Therefore, we invite you to contact us and discover the World of Salona Yachts in Croatia at any time of your convenience.





SUPREME
SAILING
SATISFACTION





SALONA
Y A C H T S

salonayachts.com